

# USA train series

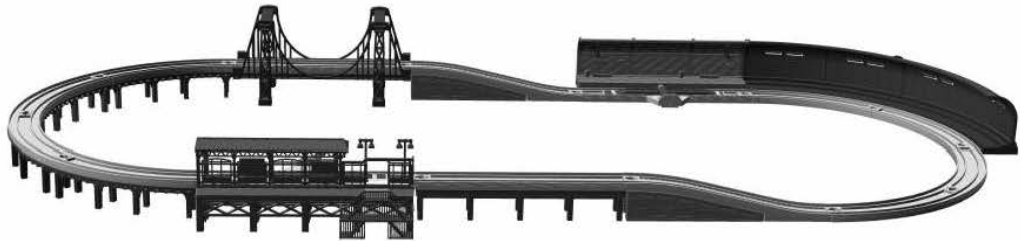
## Collectors Edition

### New York City Subway

<506624>

## Instructions

### Suggested use



### Comes with

First Car x 1



Motor Car x 1



Rear Car x 1



Stickers x 1



Straight train track x 2



Locking switch train track x 2



Curve train track x 8



Riser train track A x 1  
Riser train track B x 1



Straight Elevated tier x 2



Riser base x 2



Steel bridge x 2



Curve Elevated tier x 4



Tunnel wall x 2



Subway station sign x 2



Subway station wall x 1



Tunnel base x 2



Subway station base x 1



### Raised station

Light x 2



Roof x 1



Raised Station side & Roof x 1



Platform x 1



Stairs x 1



Raised platform base x 1



## How to use

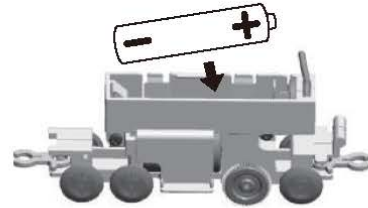
### How to insert battery.

Insert battery into the Motor Car.

- ① Push the lock of the Train cover to lift and remove it.

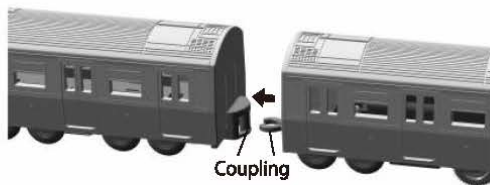


- ② Insert battery as shown.

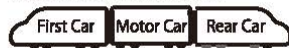


### How to connect this item.

Attach hooks as shown.

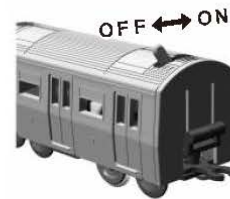


Attach cars in this order.



### How to turn on and off.

Use the lever as shown.



Use caution hair may become caught in this item's winding action.

## ⚠ Caution

Please read before use and keep for reference.

### ⚠ Train set safety

- ① Do not ingest this item or give to children under 3 years of age.
- ② This item may have sharp edges and can cause injury to such things as eyes. Do not step on this item.
- ③ Keep out of reach of children under 3 years of age.
- ④ Supervise children who play with this item.
- ⑤ Do not use near fire or heated place.
- ⑥ Do not drop this item or use excessive force.
- ⑦ Use caution when handling this item.
- ⑧ This item is made of soft plastic and may bend with use. You may bend it back into shape.

### ⚠ Motor car safety

Failure to configure battery correctly may result in damage.

- ① Do not use rechargeable batteries with this item.
- ② Insert the battery in its proper orientation.
- ③ Remove battery when not in use.
- ④ Do not push this item by hand, gears may be damaged.
- ⑤ Use caution when changing batteries.

## Materials used

Train	Train Cover•Base•Wheels•Switch : Acrylonitrile butadiene styrene Hook: Polycarbonate Wheel: Rubber Gear: Polyacetal Axle•Battery ground•Screw: Steel
Structure	Main body : Polypropylene



## ⚠ WARNING:

**CHOKING HAZARD** — Small parts not for children under 3 years or any individuals who have a tendency to place inedible objects in their mouths.

\* Size, shape and color may vary

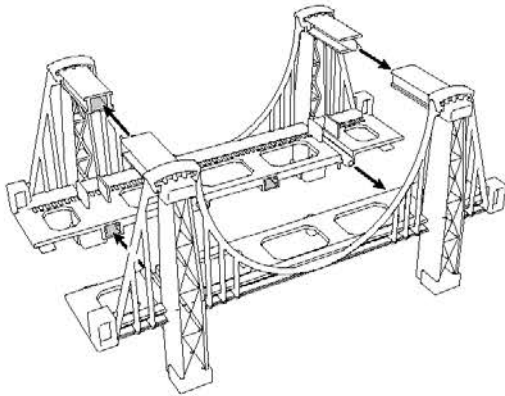
MADE IN CHINA  
SHANTOU CITY, GUANDONG PROVINCE,



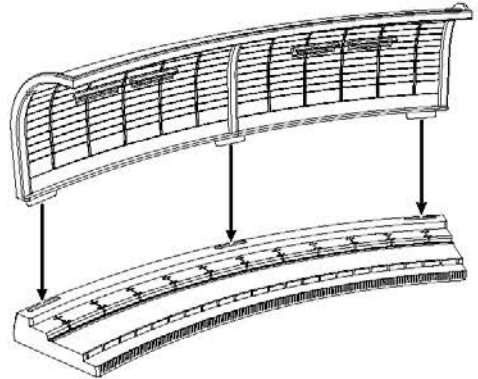
Please do not dispose of this package. Please use this package to contain the products.

# How to assemble ※Attach as shown

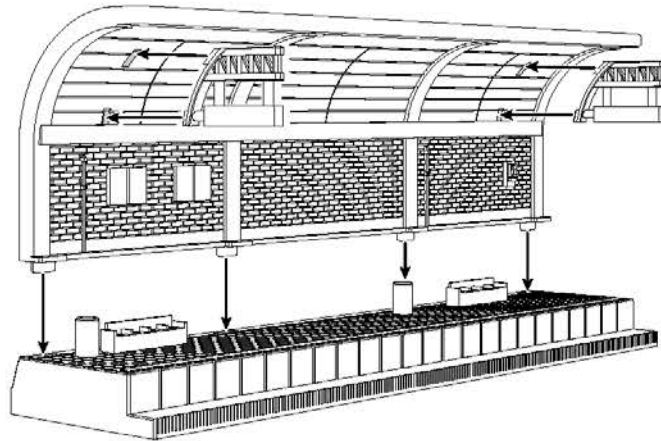
## Steel bridge



## Tunnel

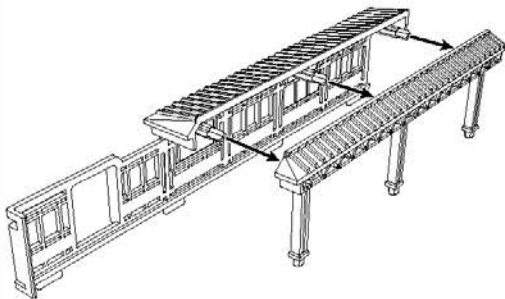


## Station

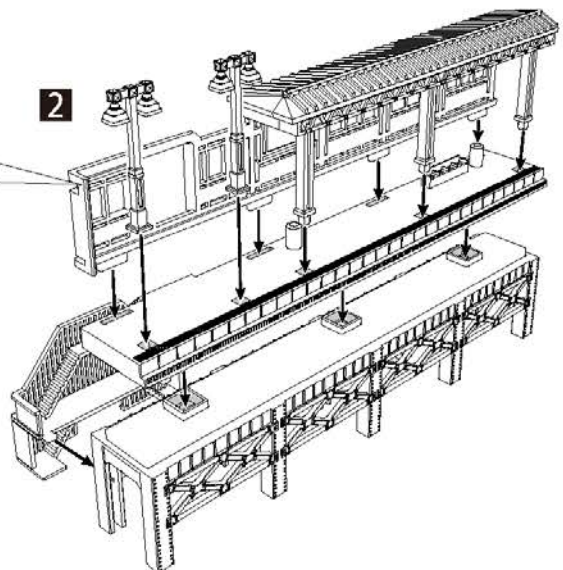


## Raised station

**1** ※Connect roof first



**2**



# How to use stickers

※Mount as shown  
 ※Stickers may be attached before station is assembled

